

Handwritten text in a cursive script, likely a medieval manuscript. The text is written in dark ink on aged, yellowish paper. It appears to be a list or a series of entries, possibly related to a calendar or a record of events. The script is dense and somewhat difficult to decipher due to its cursive nature and the fading of the ink.

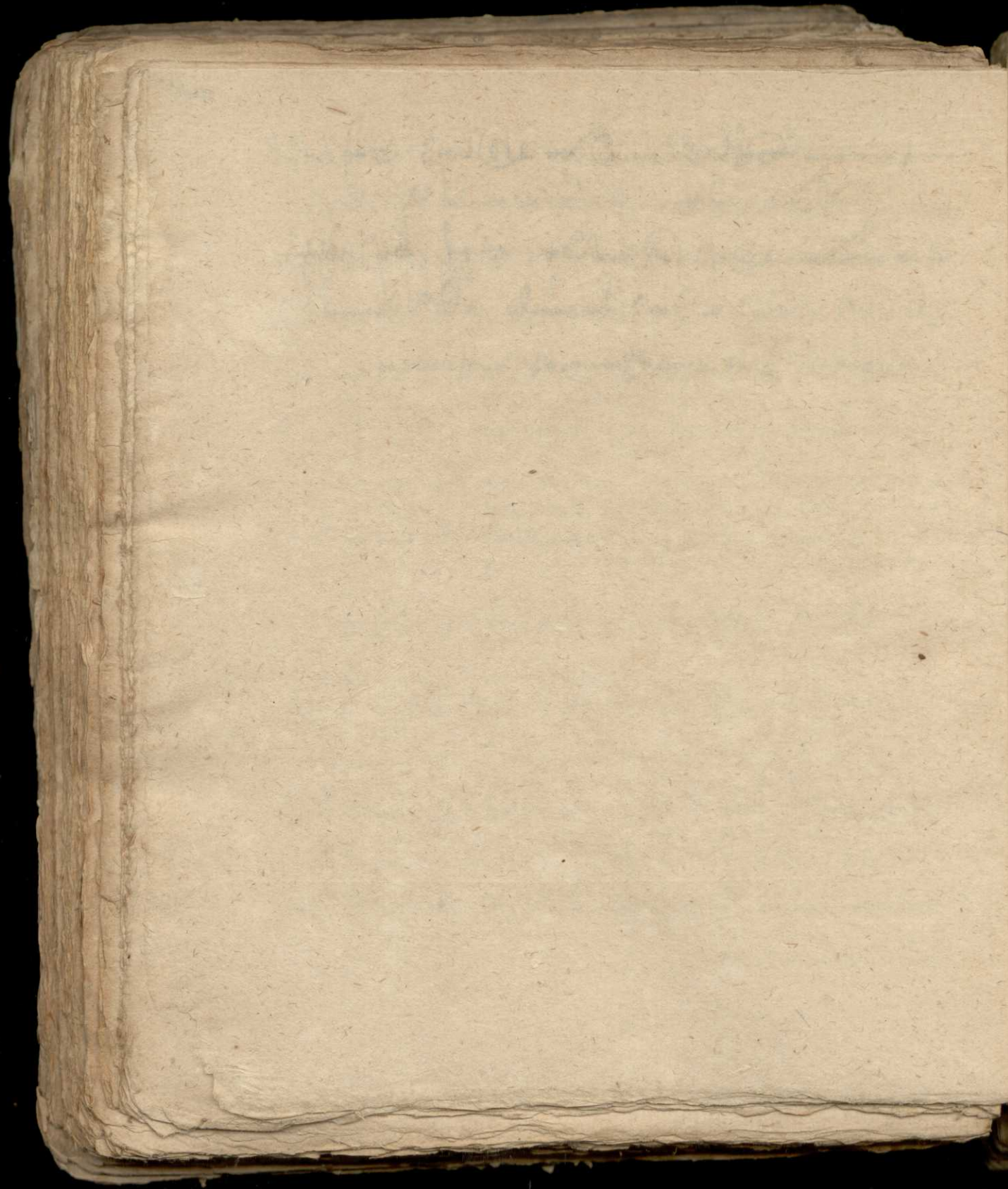
Faint, illegible handwritten text, possibly a continuation of the previous section or a separate entry. The ink is very light and the script is difficult to read.

Handwritten text, possibly a section header or a specific entry. The script is cursive and somewhat faded.

Extremely faint and illegible handwritten text, possibly a continuation of the previous section or a separate entry. The ink is very light and the script is difficult to read.

144





145



