

XXII.

Bassus

First staff of music for Bassus, starting with a treble clef, a key signature of one flat (B-flat), and a common time signature (C). The staff contains a series of notes and rests, ending with a fermata and a repeat sign.

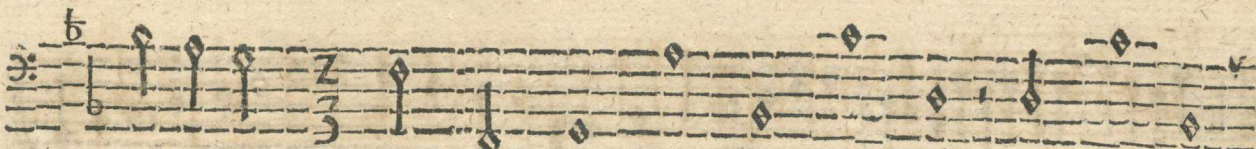
Second staff of music for Bassus, continuing the piece with a treble clef, a key signature of one flat, and a common time signature. It features a series of notes and rests, ending with a fermata and a repeat sign.

Third staff of music for Bassus, continuing the piece with a treble clef, a key signature of one flat, and a common time signature. It features a series of notes and rests, ending with a fermata and a repeat sign.

Fourth staff of music for Bassus, continuing the piece with a treble clef, a key signature of one flat, and a common time signature. It features a series of notes and rests, ending with a fermata and a repeat sign.

Fifth staff of music for Bassus, continuing the piece with a treble clef, a key signature of one flat, and a common time signature. It features a series of notes and rests, ending with a fermata and a repeat sign.

Bassus.



vt re mi fa sol la la sol fa



mi re vt

