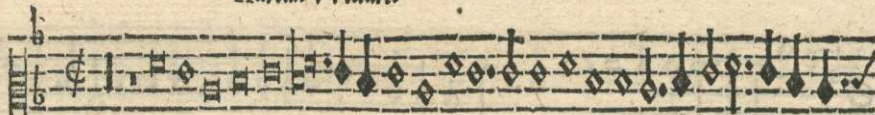


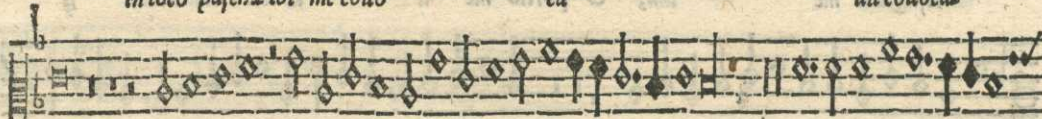
XXXVI



Ominus regit me & nihil mihi dederit



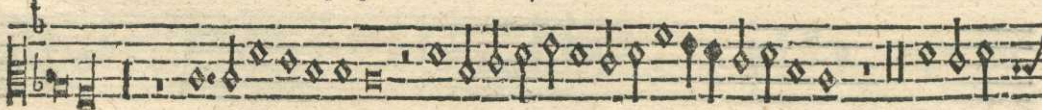
in loco pasche ibi me colloca uit colloca



uit. Super aquam re se Et o nis e di fa uit me, animam meam



conuer tit propter nomē suum. Nā & si ambulauero in me di o umbra

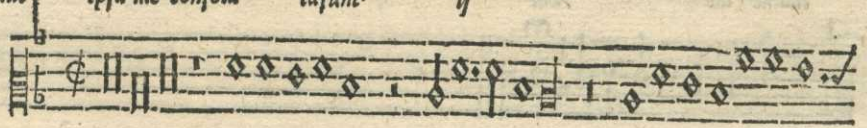


mortis, quoniam tu mecum es & batus

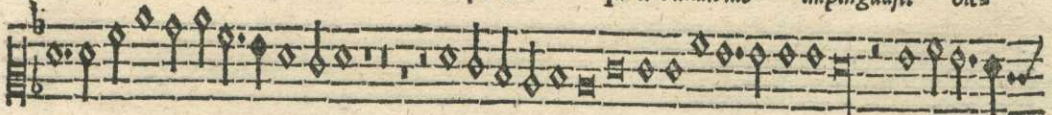


lus tuus ipsa me consola tasunt. ij

Secūda pars.



Aduersus eos qui tribulant me impinguasfi oles



o caput me um quā preclarus est & miseri cor di a tu a subsequa



tur me subsequa tur me omnibus di e bus uia



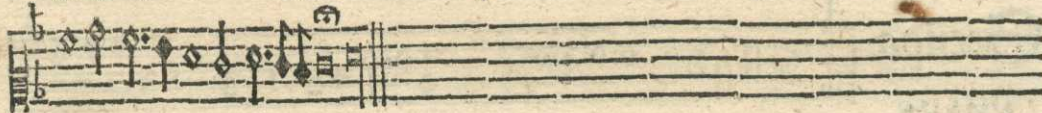
te me e & ut habem in domo Domini in longia

¶ ¶ ¶

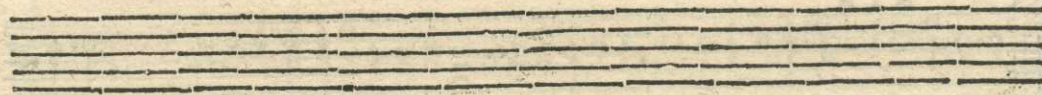
136.



tudine die rum. ij



ij



Morel.

XXXVII



Vfer à me in i qui ta tes. ij Quoniam seruus tua



us sum e go in in fir mi ta ti bus meis ij