

QVINTA PARS

Clemens non Papa IIII.

3 4



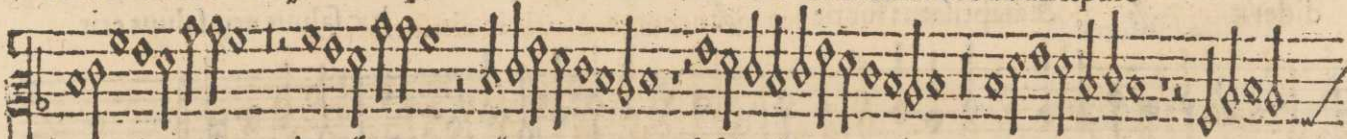
Duenit ignis diui- nus // nō cōburens sed il-



luminans // non comburens // fed illuminās fed // nō cōsumens sed lu-



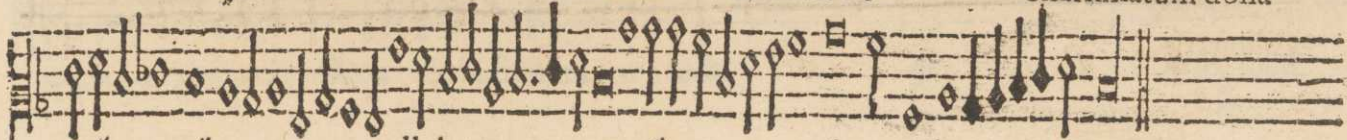
cens sed lucēs fed // non // non cōsumens sed lucens & inuenit corda discipulo-



rum inuenit corda // // discipulorum // receptacula mūda //



// munda & dedit eis charismatum dona



// // alleluya // // // A iiij